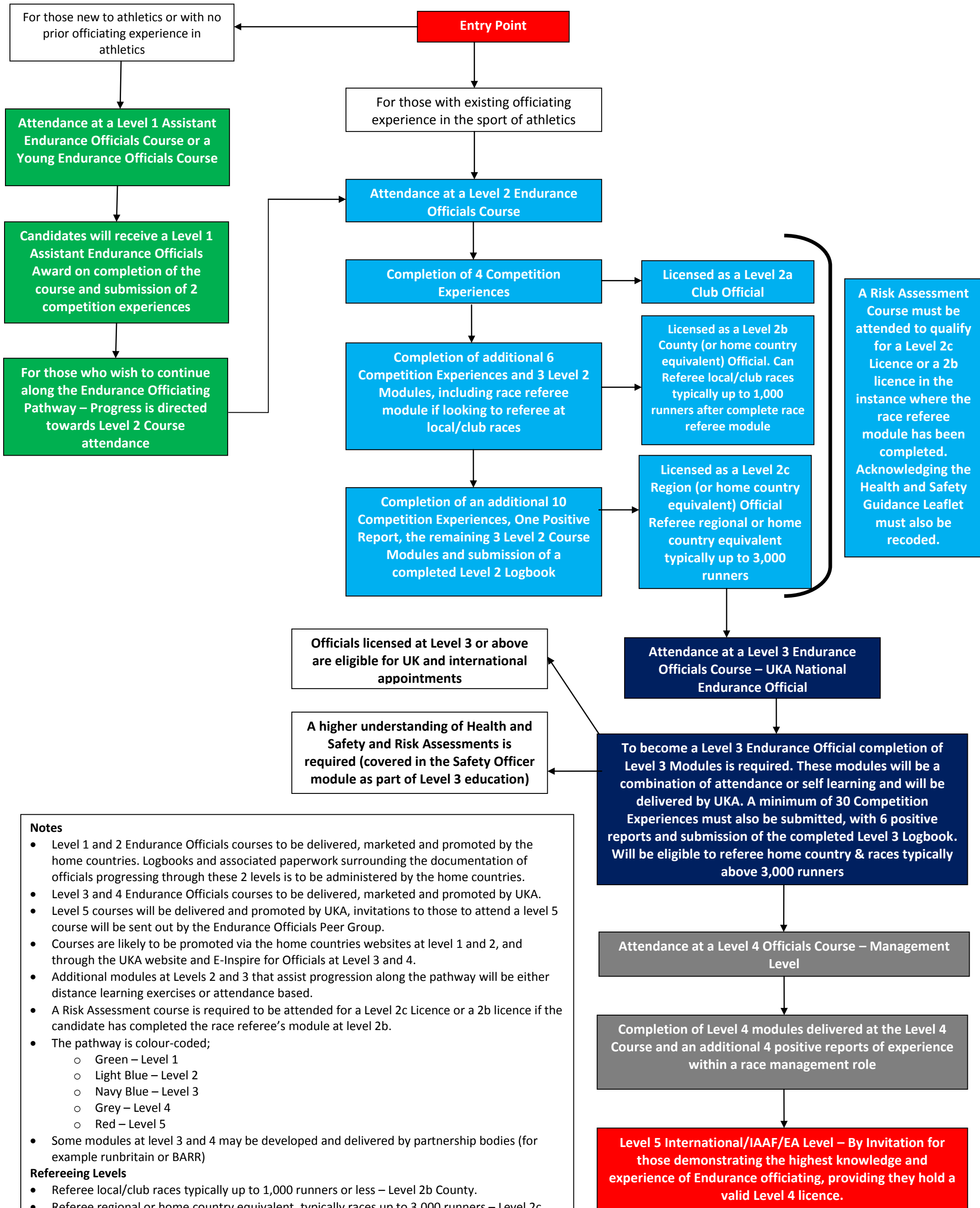


Endurance Officials Pathway



Notes

- Level 1 and 2 Endurance Officials courses to be delivered, marketed and promoted by the home countries. Logbooks and associated paperwork surrounding the documentation of officials progressing through these 2 levels is to be administered by the home countries.
- Level 3 and 4 Endurance Officials courses to be delivered, marketed and promoted by UKA.
- Level 5 courses will be delivered and promoted by UKA, invitations to those to attend a level 5 course will be sent out by the Endurance Officials Peer Group.
- Courses are likely to be promoted via the home countries websites at level 1 and 2, and through the UKA website and E-Inspire for Officials at Level 3 and 4.
- Additional modules at Levels 2 and 3 that assist progression along the pathway will be either distance learning exercises or attendance based.
- A Risk Assessment course is required to be attended for a Level 2c Licence or a 2b licence if the candidate has completed the race referee's module at level 2b.
- The pathway is colour-coded;
 - Green – Level 1
 - Light Blue – Level 2
 - Navy Blue – Level 3
 - Grey – Level 4
 - Red – Level 5
- Some modules at level 3 and 4 may be developed and delivered by partnership bodies (for example runbritain or BARR)

Refereeing Levels

- Referee local/club races typically up to 1,000 runners or less – Level 2b County.
- Referee regional or home country equivalent, typically races up to 3,000 runners – Level 2c Regional.
- Referee home country & above plus races typically over 3,000 runners – Level 3 or above.